

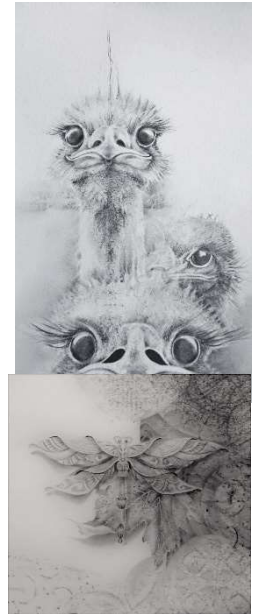


Drawing Workshop – Tone and Form. Young

6 hours workshop

- Tutor: Louise Adams
- Date: Saturday October 12th
- Time: 9 for 9 30 start
- Cost: \$60 00
- Venue Studio One/ Upstairs Southern Cross Cinema.

Participants will be guided through use of tone, form and negative space. More advanced students may want to experiment with some varied techniques which add interest to a drawing



Starting with a tonal scale exercise, followed by in depth instruction on the importance of observation and tone using selected simple objects/forms. Students will be encouraged to experiment and stretch their skills. Everyone should complete at least one drawing on the day. Suitable for beginners to advance

REQUIREMENTS –

Drawing Workshop – Tone and Form.

Tutor - Louise Adams

Students to bring

1 sheet smooth watercolour paper/Stonehenge paper (Tutor will have Stonehenge for sale on the day)

Board padded with newspaper large enough to work on ¼ sheet Stonehenge/watercolour paper

Kneadable eraser

Standard eraser

Pencils – HB, 2H, 2B, 4B – good quality

Black, fine point, felt tip pen

Ruler

Clips to hold paper in place

Couple sheets photocopy paper

Sketch book

Pencil Sharpener

Graphite stick

Paper stumps

Blu Tac

Tutor will provide –

Stonehenge paper (available for purchase at \$15/sheet or \$8 /half sheet)

Cotton Buds, Reference material, Tissues, Scribes

METHODS OF PAYMENT

Cheque/Money Order

EFT: COMMONWEALTH BANK—YOUNG 2594

ACCOUNT NAME: YOUNG SOCIETY OF ARTISTS Inc.

BSB: 062 630

ACCOUNT #: 00903326

OUR REFERENCE: workshop YOUR SURNAME